

State of Wyoming Corner Record

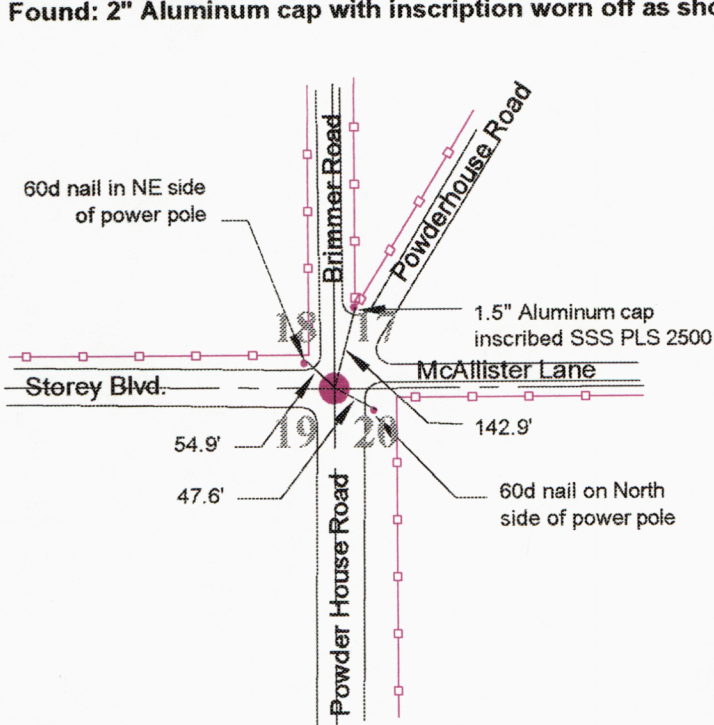
(In compliance with the CORNER PERPETUATION AND FILING ACT, Wyoming Statutes, 1997, Section 33-29-140 et. seq., and the Rules and Regulations of the Board of Registration for Professional Engineers and Professional Land Surveyors)

Reverse side of this form may be used if more space is needed.

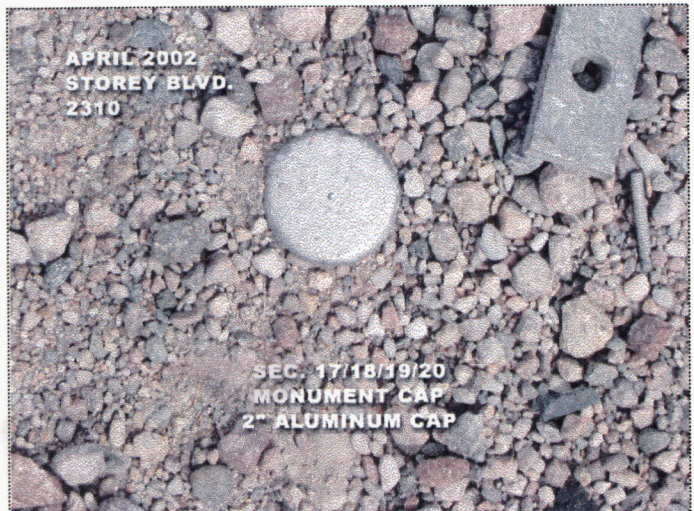
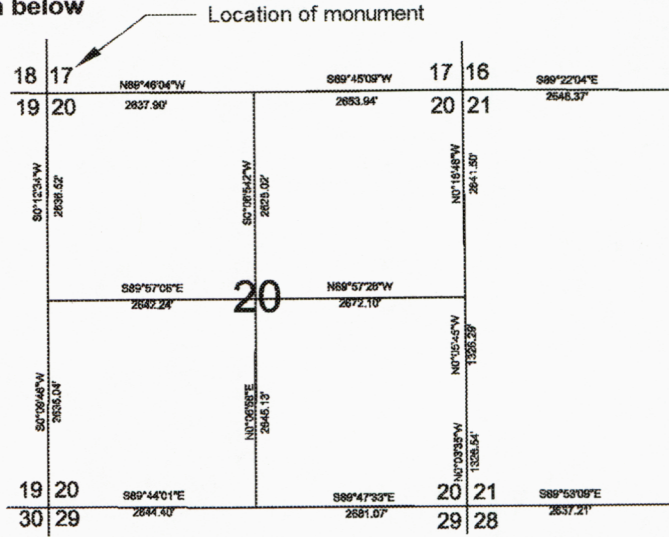
Record of original survey and citation of source of historical information (if corner is lost or obliterated). Description of corner monumentation evidence found and/or monument and accessories established to perpetuate the location of this corner. Sketch of relative location of monument, accessories, and reference points with course and distance to adjacent corner(s) (if determined in this survey). Method and rationale for reestablishment of lost or obliterated corner.

Record: Set Granite Boulder 24 x 10 x 9

Found: 2" Aluminum cap with inscription worn off as shown below



Corner Ties Detail



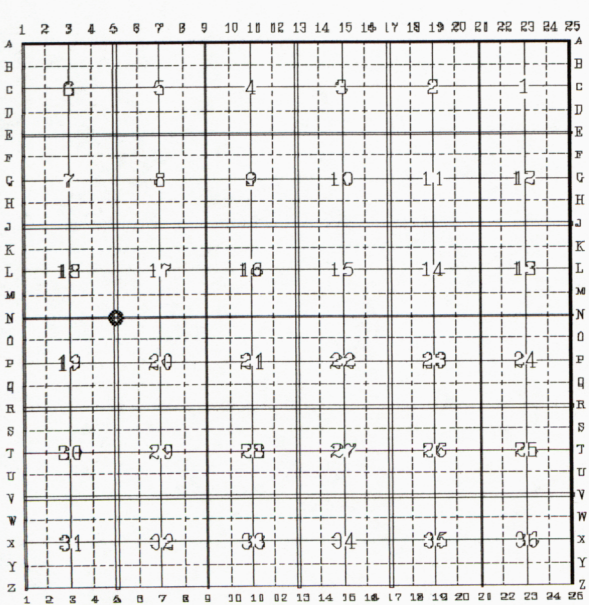
Cap Stamping Detail



Vicinity Map

Date of Field Work: April 2002 Office Reference: 2310 - Storey Blvd

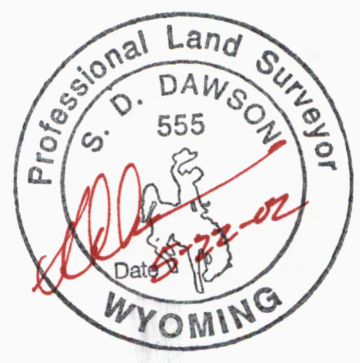
CROSS INDEX DIAGRAM



Firm/Agency, Address
Washington Infrastructure Services
5920 Yellowstone Road
Cheyenne, Wyoming 82009
Telephone Number: 307-634-1101

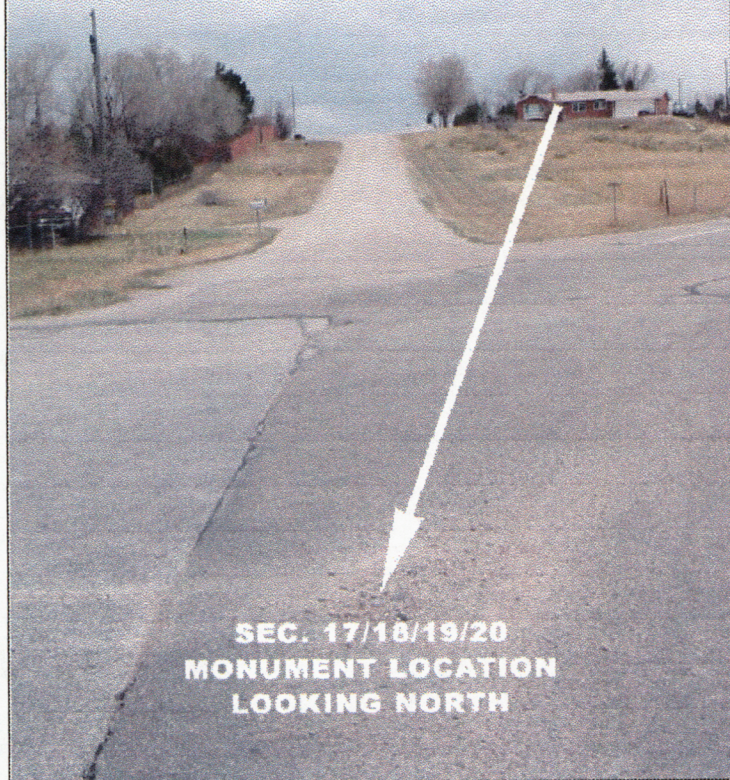
This corner record was prepared by me or under my direction and supervision.

SEAL & SIGNATURE
[Signature]



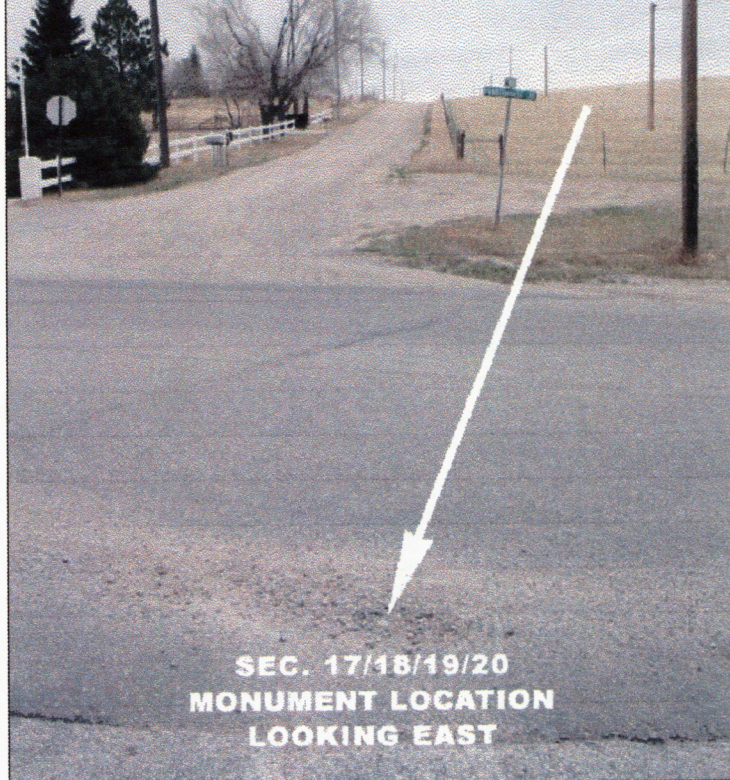
Corner Name: NW Corner of Section 20 Section: 20 T 14N R 66W ; 6th P.M. Cross-Index No.: N-5
SBRPEPLS/PLSW: March 1994; PLSW January 1998

**APRIL 2002
STOREY BLVD.
2310**



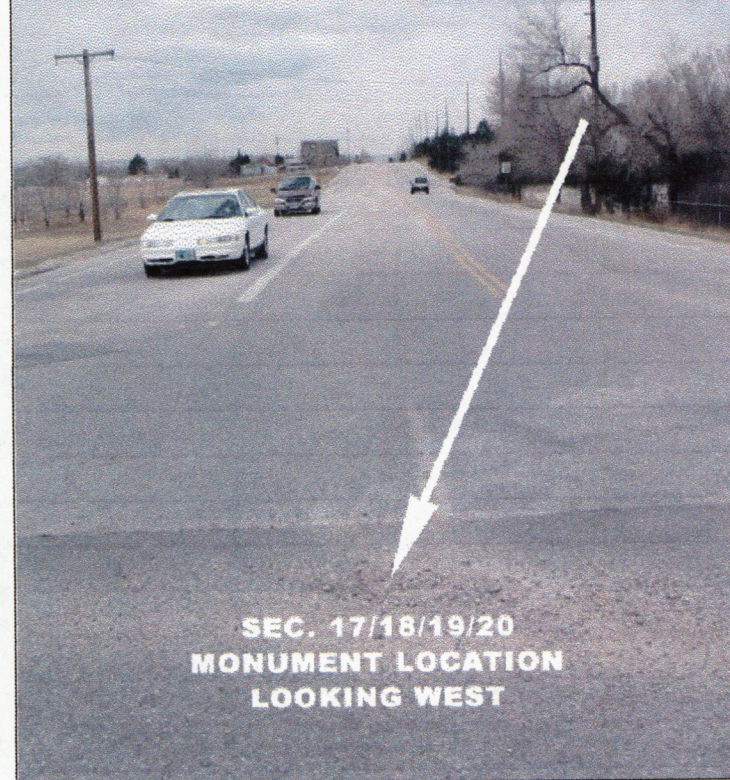
**SEC. 17/18/19/20
MONUMENT LOCATION
LOOKING NORTH**

**APRIL 2002
STOREY BLVD.
2310**



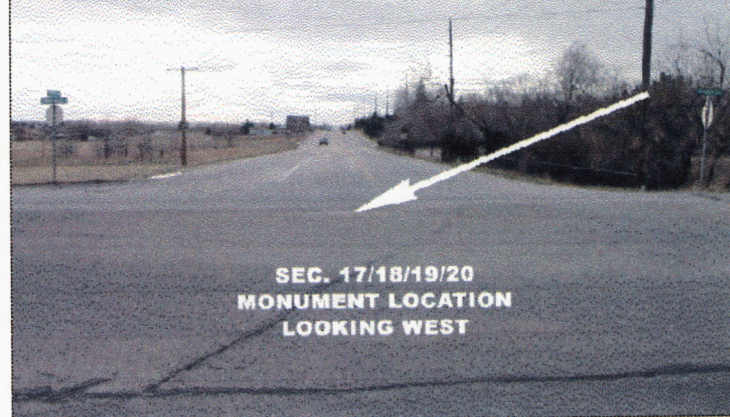
**SEC. 17/18/19/20
MONUMENT LOCATION
LOOKING EAST**

**APRIL 2002
STOREY BLVD.
2310**



**SEC. 17/18/19/20
MONUMENT LOCATION
LOOKING WEST**

**APRIL 2002
STOREY BLVD.
2310**



**SEC. 17/18/19/20
MONUMENT LOCATION
LOOKING WEST**

